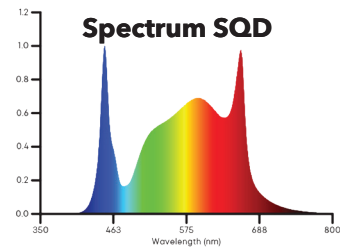


XR-830W LED



XR-830W LED test environments:

1. Coverage Area: 1.2m x1.2m=1.44m²
2. LED fixture is installed in darkroom, the distance from the light to the canopy:
20cm/30cm/40cm/50cm/60cm
3. Test Instrument: EVERFINE Specialized Plant Spectrum Analyzer PLA-20



PPFD(umol/m²/s)---Height 0.2m(0.66')--Input Power 830W

509	620	812	739	783	815	636	534
982	1283	1388	1349	1364	1384	1287	1004
1114	1470	1576	1541	1536	1580	1476	1147
1102	1463	1572	1537	1524	1568	1464	1151
1053	1413	1531	1489	1476	1519	1415	1103
1065	1421	1526	1491	1486	1531	1428	1098
933	1233	1339	1317	1366	1336	1238	954
525	629	763	728	735	769	627	519

Illumination (K Lx)---Height 0.2m(0.66')--input Power 830W

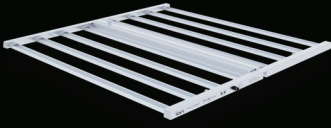
34	41	50	47	47	50	41	34
65	81	79	76	76	79	81	65
72	95	93	91	91	93	95	72
70	92	98	96	96	98	92	70
70	92	98	96	96	98	92	70
72	95	93	91	91	93	95	72
65	81	79	76	76	79	81	65
34	41	50	47	47	50	41	34

PPFD(umol/m²/s)---Height 0.3m(0.98')--Input Power 830W

452	581	617	639	638	611	562	475
724	963	1056	1069	1048	1052	1005	731
888	1180	1314	1319	1319	1331	1215	938
918	1236	1375	1384	1394	1367	1258	968
912	1201	1325	1393	1443	1358	1250	961
839	1131	1265	1270	1269	1283	1166	889
675	992	1041	1035	1016	1004	956	722
426	596	659	663	659	651	578	441

Illumination (K Lx)---Height 0.3m(0.98')--Input Power 830W

30	39	43	43	43	43	39	30
47	61	69	68	68	69	61	47
54	76	79	81	81	79	76	54
56	81	86	89	89	86	81	56
56	81	86	89	89	86	81	56
54	76	79	81	81	79	76	54
47	61	69	68	68	69	61	47
30	39	43	43	43	43	39	30



XR-830W LED

PPFD($\mu\text{mol}/\text{m}^2/\text{s}$)--Height 0.4m(1.31')--Input Power 830W

446	551	601	626	655	644	601	447
629	808	915	937	948	913	820	645
744	983	1111	1147	1137	1106	988	777
798	1041	1168	1205	1204	1166	1051	804
787	1011	1140	1163	1171	1137	1018	808
712	933	1062	1099	1088	1058	939	732
581	763	866	888	916	864	789	616
420	551	614	628	630	613	553	440

Illumination (K Lx)--Height 0.4m(1.31')--Input Power 830W

29	36	40	41	41	40	36	29
42	51	54	58	59	56	51	42
48	63	68	71	71	68	63	48
52	68	75	76	76	75	68	52
52	68	75	76	76	75	68	52
48	63	68	71	71	68	63	48
42	51	56	58	58	56	51	42
29	36	40	41	41	40	36	29

PPFD($\mu\text{mol}/\text{m}^2/\text{s}$)---Height 0.5m(1.64')--Input Power 830W

416	516	561	597	611	594	553	414
562	706	798	810	813	782	690	550
641	833	937	981	963	928	825	657
694	880	978	1029	1035	987	878	693
686	856	961	1006	1004	962	853	694
631	800	893	933	918	885	785	629
519	665	749	766	765	742	666	524
379	496	561	587	575	555	505	400

Illumination (K Lx)---Height 0.5m(1.64')--Input Power 830W

27	33	37	39	39	37	33	27
36	45	48	52	52	48	45	36
41	54	59	61	61	59	54	41
46	58	63	66	66	63	58	46
46	58	63	66	66	63	58	46
41	54	59	61	61	59	54	41
36	45	48	52	52	48	45	36
27	33	37	39	39	37	33	27

PPFD($\mu\text{mol}/\text{m}^2/\text{s}$)---Height 0.6m(1.96')--Input Power 830W

400	469	518	552	547	530	483	392
498	608	684	714	719	673	598	487
567	704	786	830	825	787	700	570
609	762	853	895	878	832	739	610
600	741	835	871	876	825	741	591
553	678	772	799	804	755	678	555
472	576	648	686	674	651	579	477
363	444	497	515	530	502	443	367

Illumination (K Lx)---Height 0.6m(1.96')--Input Power 830W

25	29	33	34	34	33	29	25
32	39	43	45	45	43	39	32
36	45	51	53	53	51	45	37
40	50	55	57	57	55	48	40
40	50	55	57	57	55	50	40
36	45	51	53	53	51	45	36
32	39	43	45	45	43	39	32
25	29	33	34	34	33	29	25