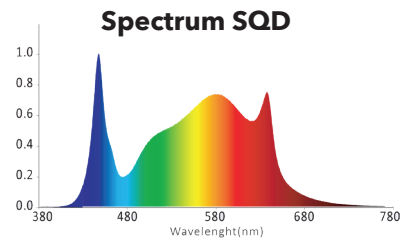


720W LED



720W LED test environments:

1. Coverage Area: 1.2m x1.2m=1.44m²
2. LED fixture is installed in darkroom, the distance from the light to the canopy:
20cm/30cm/40cm/50cm/60cm
3. Test Instrument: EVERFINE Specialized Plant Spectrum Analyzer PLA-20



PPFD($\mu\text{mol}/\text{m}^2/\text{s}$)---Height 0.2m(0.66')--Input Power 720W

618	719	723	675	705	771	767	668
858	980	998	982	995	1028	1011	891
922	1060	1086	1060	1069	1103	1072	931
953	1093	1118	1099	1098	1123	1097	971
935	1082	1105	1091	1086	1108	1081	956
883	1034	1059	1042	1036	1058	1029	918
810	956	978	955	947	979	962	844
633	726	747	712	680	722	718	620

Illumination (K Lx)---Height 0.2m(0.66')--input Power 720W

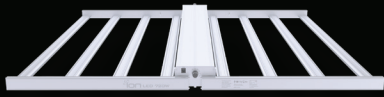
38	45	46	44	46	50	49	43
56	63	65	63	64	66	65	58
60	68	70	68	69	71	69	60
62	71	72	71	71	72	71	63
60	70	71	70	70	72	70	62
57	67	68	67	67	68	66	59
52	62	63	62	60	61	61	55
41	47	48	46	44	45	44	38

PPFD($\mu\text{mol}/\text{m}^2/\text{s}$)---Height 0.3m(0.98')--Input Power 720W

517	588	611	607	627	659	626	567
694	833	867	864	869	880	851	719
763	929	974	974	979	988	951	802
834	975	1022	1019	1022	1027	983	884
882	963	1015	1013	1018	1019	975	932
771	925	967	965	968	970	927	791
678	815	857	853	854	860	832	710
565	637	644	635	632	638	595	615

Illumination (K Lx)---Height 0.3m(0.98')--Input Power 720W

31	36	39	39	41	43	41	35
45	54	56	56	56	57	55	47
49	60	63	63	63	64	62	52
52	63	66	66	66	66	64	54
52	62	66	65	66	66	63	54
50	60	62	62	58	63	60	51
44	53	55	55	55	56	54	46
34	41	42	41	41	41	38	33



720W LED

PPFD($\mu\text{mol}/\text{m}_2/\text{s}$)--Height 0.4m(1.31')--Input Power 720W

426	493	542	561	573	583	542	450
572	687	743	761	768	757	709	591
641	784	853	867	870	861	801	671
679	823	893	913	915	903	842	703
671	821	889	905	904	890	834	706
641	778	837	855	854	841	784	651
548	678	733	745	749	738	681	570
431	519	562	572	570	556	513	438

Illumination (K Lx)--Height 0.4m(1.31')--Input Power 720W

28	32	35	36	37	38	35	29
37	44	48	49	50	49	46	38
42	51	55	56	56	56	52	44
44	53	58	59	59	58	55	46
43	53	57	58	58	58	54	46
42	50	54	55	55	54	51	42
35	44	47	48	48	48	44	37
28	34	36	37	37	36	33	28

PPFD($\mu\text{mol}/\text{m}_2/\text{s}$)--Height 0.5m(1.64')--Input Power 720W

361	435	473	500	506	507	460	393
480	574	628	650	653	627	591	507
542	647	722	748	754	738	683	572
472	662	725	792	792	768	712	520
521	613	676	759	785	725	662	570
542	647	720	739	742	722	669	592
466	566	625	647	647	629	580	486
371	457	506	516	518	508	458	376

Illumination (K Lx)---Height 0.5m(1.64')--Input Power 720W

23	28	31	32	33	33	30	26
31	37	41	47	52	41	38	33
35	42	47	48	49	48	44	37
45	49	51	51	51	50	46	41
41	46	47	49	51	51	50	46
35	42	47	48	48	47	43	39
30	37	40	53	49	41	38	32
24	30	33	33	33	33	30	24

PPFD($\mu\text{mol}/\text{m}_2/\text{s}$)---Height 0.6m(1.96')--Input Power 720W

363	415	449	475	484	469	423	363
442	516	573	595	596	576	532	445
495	588	645	670	669	645	590	493
519	616	679	706	705	679	620	524
521	613	676	699	697	672	614	514
489	575	630	652	651	626	571	489
430	506	555	578	580	556	510	433
397	413	457	476	474	451	409	348

Illumination (K Lx)---Height 0.6m(1.96')--Input Power 720W

23	27	29	31	31	30	27	24
29	33	37	39	39	37	35	29
32	38	42	43	43	42	38	32
34	40	44	46	46	44	40	34
34	40	44	45	45	43	40	33
32	37	41	42	42	41	37	32
28	29	36	37	38	36	33	28
27	27	30	31	31	29	27	23